



—

”

”

’

•

-

,

—

-

,

”

“

– (33/26.11.12) 2100 / 28.11.2012
 .47, .48 .49 – .
 14.00 . 20 2012 . „ ”
 – .

:

- . . . - ,
- . - ,
- - . - ,

203 :

- -5 .
- -53 .
- -2 .
- -10 .
- -56 .
- -34 .
- -5 .
- -5 .
- 60 57
- -23 .
- ○ 326 ,9 317
- -3 .

	4
I.	5
II.	6
III.	8
IV.	10
V.	59
VI.	60
VII.	62
V	64
X.	65



BMS	-	body mass index ()	
BSA	-	body surface area		
CRP	-	C-		
CyA	-	Cyclosporin		
DLQI	-	Dermatology Life Quality Index		
IMID	-	-		
IL	-			
IFN-	-	-		
HDL	-			
LDL	-			
MTX	-	Methotrexate		
NCEP –ATP III	-	National Cholesterol Education Program – A	Panel III	
NO	-			
PASI	-	Psoriasis Area and Severity Index		
PUVA	-	P –	+ UVA –	
QoL /	-			
Th-1	-	T	1	
Th-17	-	T	17	
TNF-	-	Tumor necrosis factor-		
UV / UV	-		/	
	-			
	-			
	-			
	-			
	-			
	-			
	-			
	-			
	-			
	-			
/ PsA	-			
	-	-		
-1	-		1	
-2	-		2	
/	-	-	/	-
	-	-		
	-			
-1/ -2	-		1 /	2

Psoriasis („psora”, „ ”)

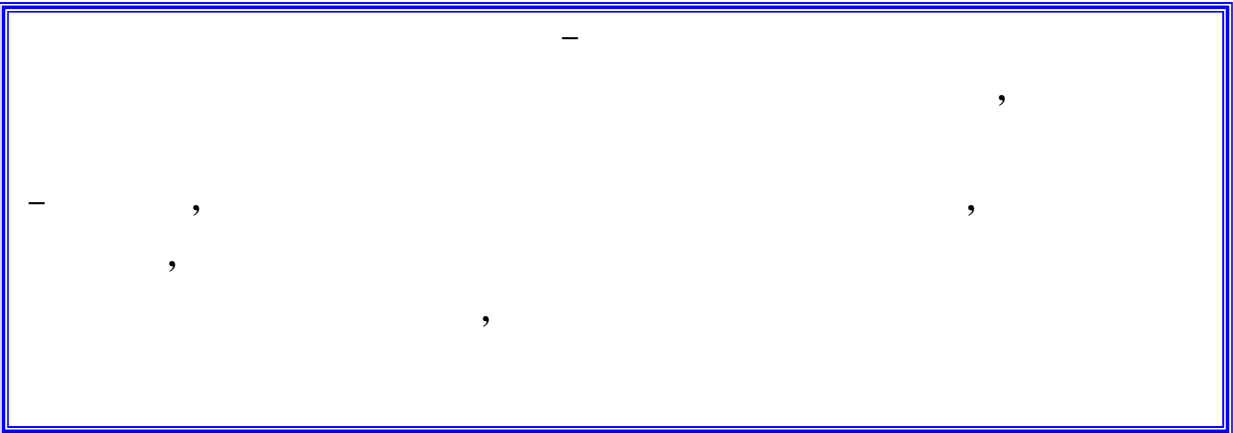
1808

Robert Willan.

Rifampicin

, , , .
, , ,
- .

• _____



1. ,
2. 2012 . — 2007 —
3. , . ,

4.

5.

,

6.

,

,

7.

-

8.

,

,

9.

-

-

,

10.

-

2

11.

,

,

12.

Dermatology Life Quality Index

13.

DLQI

14.

1. :
- 365 - , -
- 2007 – 2012 .(.1)

I:

							Total		
		SD	SE		SD	SE		SD	SE
	50,77	16,904	1,164	49,41	16,616	1,357	50,20	16,775	,883
	12,71	10,872	,756	10,19	10,593	,874	11,66	10,813	,575
PASI	20,820	11,9920	1,3084	22,520	11,2212	1,4863	21,507	11,6758	,9833

- 174 ,
- 123 ,
Dermatology Life Quality Index (DLQI)
2012 .
- 47 ,
Dermatology Life Quality Index (DLQI),
2012 .
- 35 (- A46,
- L08.0 L20.8 -
-10), DLQI -
2012 .
- 41 ,
2012 . DLQI, -
- 101 , ,
2012 . , 2010 -
.(.2)

2:

/									
	50,77	49,41	50,20	47,95	50,66	49,13	50,17	49,69	49,97
N	216	149	365	57	44	101	268	194	462
SD	16,904	16,616	16,775	8,127	5,722	7,273	15,490	14,857	15,213
SE	1,164	1,357	,883	1,076	,863	,724	,946	1,067	,708

2. :

2.1.

❖ - 2007 - 2012 .
 1552 ,, ” 2012 .
 806 , 764 ,

❖ :

- ✓ Body Surface Area (BSA)
- ✓ Psoriasis Area and Severity Index (PASI)
- ✓ Nail Psoriasis Severity Index (NAPSI)
- ✓ Dermatology Life Quality Index (DLQI)

2.2.

❖ HDL-C, , , , , , ,

❖ Agar (S) Dermasel Selective Agar (DSA) Sabouraud Dextrose -

2.3.

- ❖
- ❖
- ❖

IBM-SPSS Statistics 19.0.0.

p < 0,05.

Statgraphics Plus for Windows EXCEL.

V.

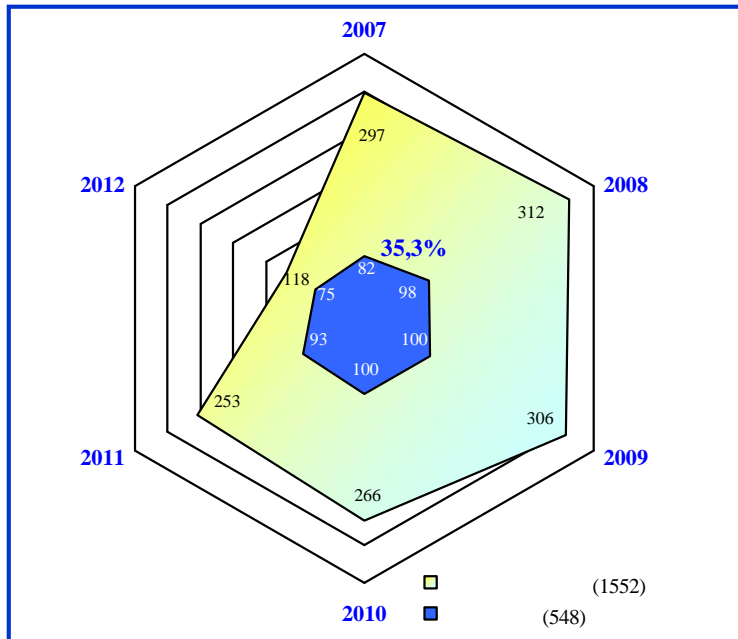
1.

1.1.

–

2007 – 2012 .

2012 . 1552 (764
 806 ; 48,1% 51,9%) 247 („
 548 (35,3%) – 347 (63,3%) 201 (36,7%). (.I .3



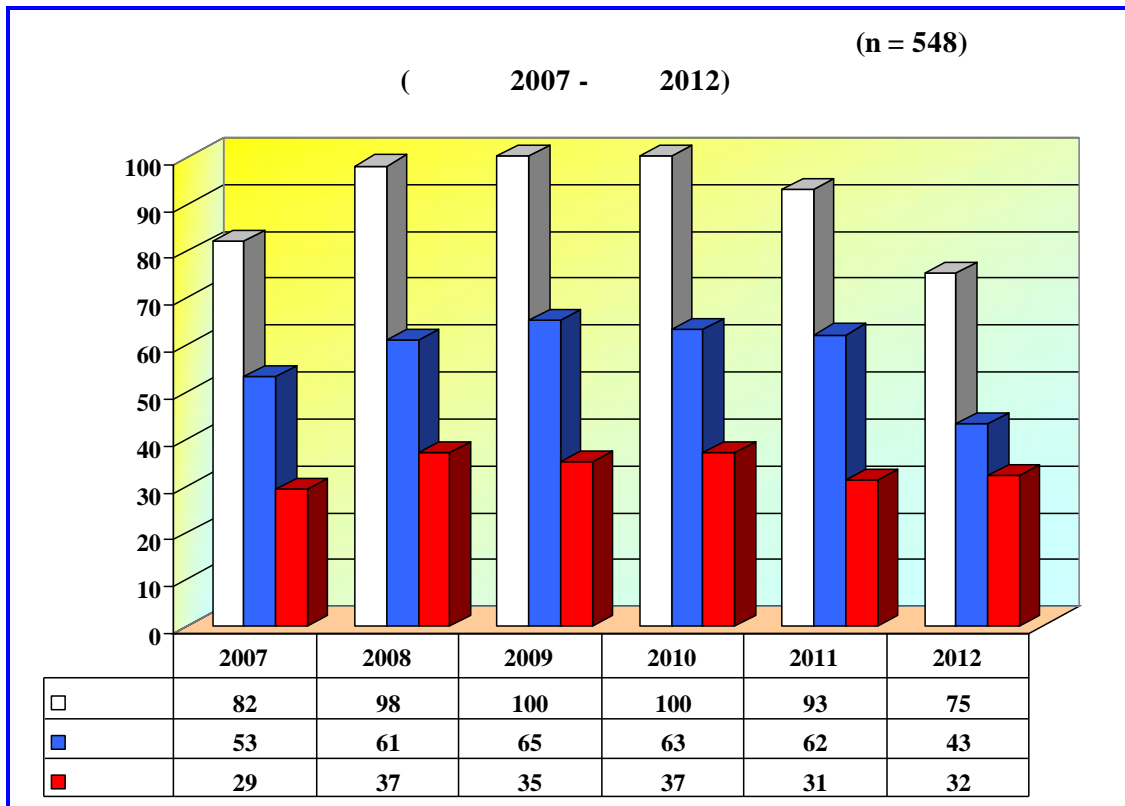
I:

247

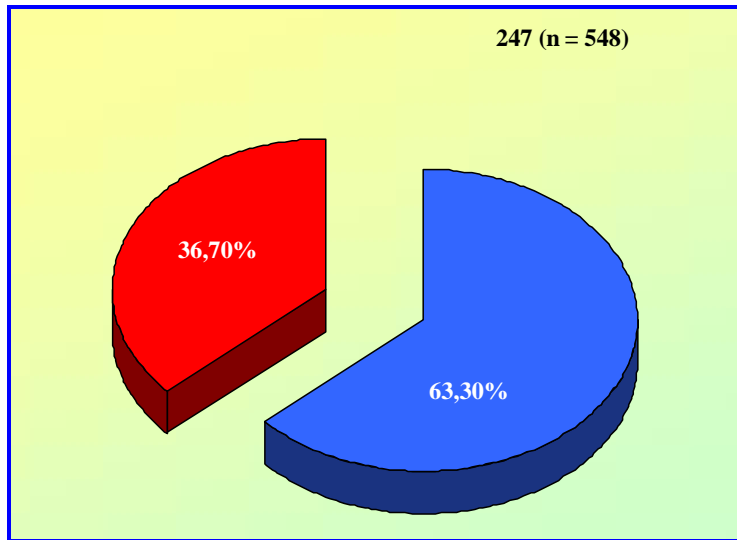
3:

				247 ()		
%	1552	746	806	548 (35,3%)	347 (46,5%)	201 (24,9%)
	100%	48,1%	51,9%	100%	63,3%	36,7%
2007	297	133	164	82	53	29
2008	312	157	155	98	61	37
2009	306	140	166	100	65	35
2010	266	127	139	100	63	37
2011	253	135	118	93	62	31
2012	118	54	64	75	43	32

(48,1% 51,9%),
- 63,3% 36,7% (.2 3)



2:



3:

1.2.

–

, , , .

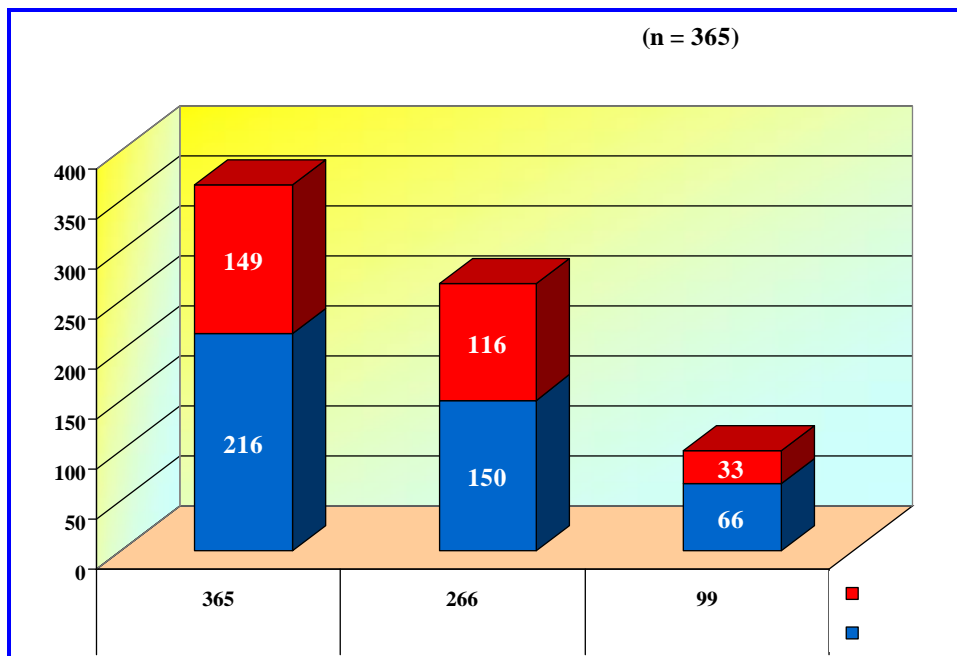
548- 247 ,

266 (150 116), 282 –

(197 85). (.4) (282

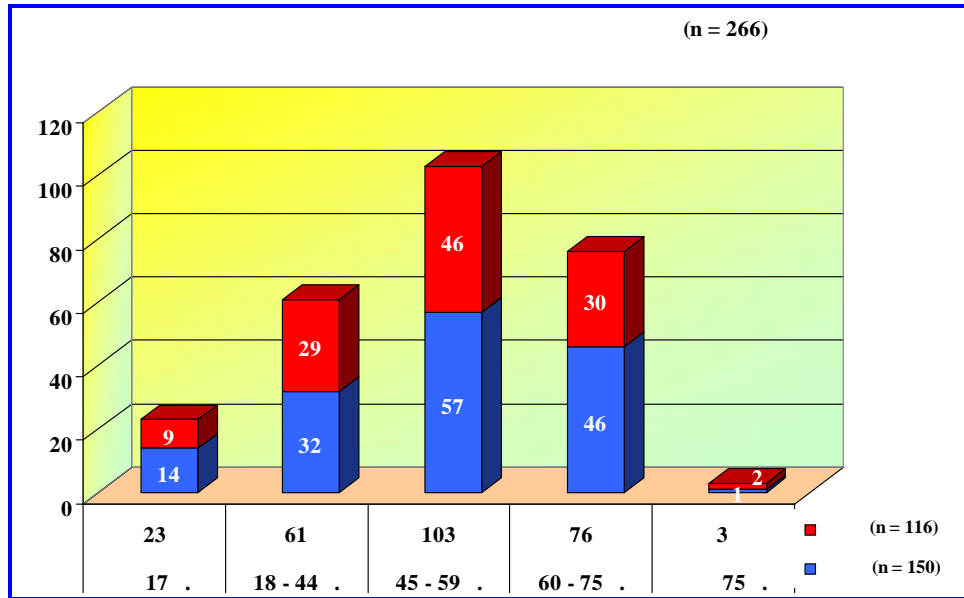
), – 58

(37 21 , 6, 7, 9 , ,

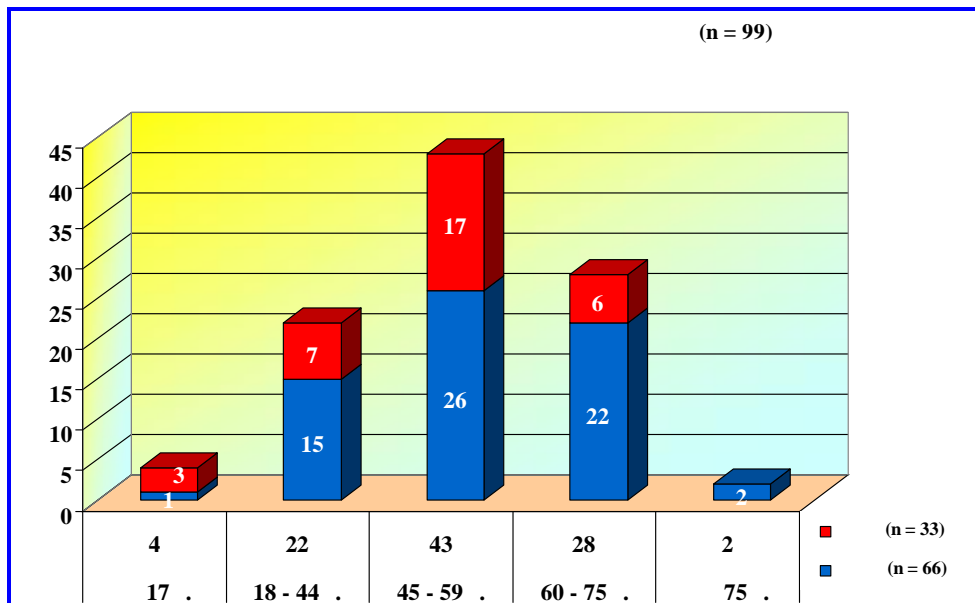


4

- 17 ; 60 - 74 ; 100 ; 18 - 44 ; 75 - 89 ; 90 - 99 - ; 45 - 59 ; 60 - 74 ; 75 - 89 ; 90 - 99 - ; 0



5



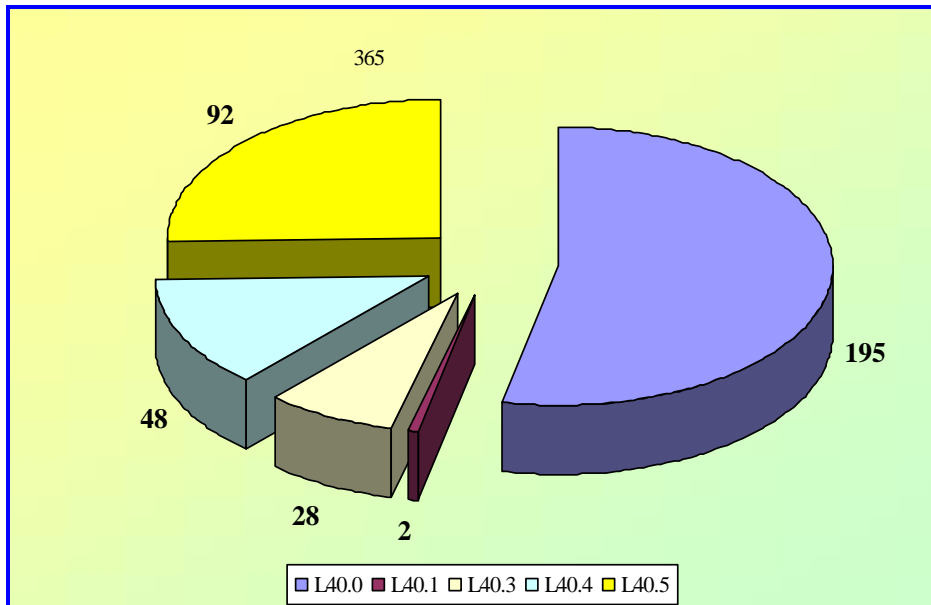
6

) (4, . (.4)

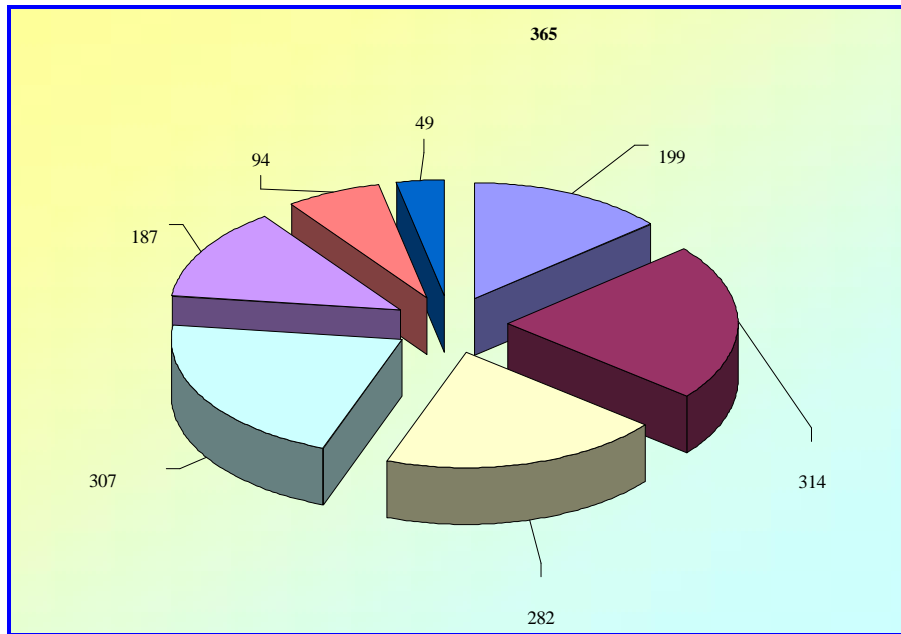
4:

	17 .		18 – 44 .		45 – 59 .		60 – 75 .		75 .	
	7,4 %		22,7 %		40,0 %		28,5 %		1,4 %	
1	3,8 %	2,4 %	8,8 %	7,9 %	15,6 %	13,4 %	12,6 %	8,2 %	0,3 %	0,5 %
>1	0,5%	0,8 %	4,1 %	1,9 %	7,1 %	4,6 %	6 %	1,6 %	0,5%	0 %

() - 365 ,
 - 195 , 53,4% ,
 92- (25,2%), 48 (13,15%), -
 28 (7,7%), 2- (0,55%).
 (7 , L40.0,
 (18). (.7)
), 314 307 , . . 86% 84,1% (. ;
 (54,5%) - 282- (77,8%). 199
 (187). - 51,2% 94 (25,7%),
 , 46 - (28 -
 18 - , (. ,
 (13,4%), , , ,) 49 . (.8)



7: (-10)



8:

(„ ”)

.(.5)

5:

(E. Christopher, 2012)

	Psoriasis palmo-plantaris	18	Pustulosis palmo-plantaris	28
	Psoriasis	262	Psoriasis pustulosa generalisata	2
	Psoriasis guttata	48		
	Erythrodermia psoriatica	7		

’ - ’ + ; +
 ; + ;
 + .

C Henseler Christophers (1985),

40

, -1)

- 1 (

- 2 (

-2), -1 197 (54%) 365 , 168 (46%)
 - 2. , -1 109 (55,3%) 88 (44,7%)
 197 , -2 107 (63,7%) 61 (32,3%)
 168 . (.6)

6: 365

		(197)		(168)
	109	55,3 %	107	63,7 %
	88	44,7 %	61	32,3 %
o	197	54 %	168	46 %

-1 ,
 (,) ,
 -2, , -1,
 (.7)

7: 365

		(136)	(61)		(130)	(38)		
% /	71	52,2 %	38	62,3 %	79	60,8 %	28	73,7 %
	65	48,8 %	23	37,7 %	51	39,2 %	10	26,3 %
	136	100 %	61	100 %	130	100 %	38	100 %
	197 (54 %)				168 (46 %)			

1.3.

(.12)

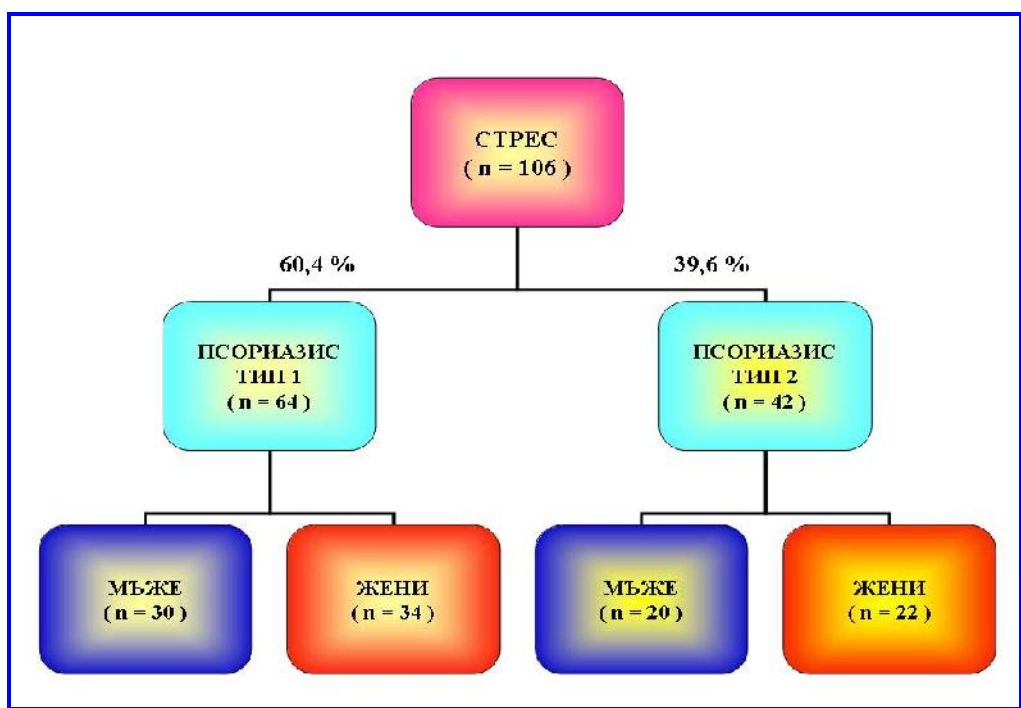
- -1 (40 .)
 , -2 90 (24,65%)
) 28 , -2 16 (12 - 58 32 -1 74
 8, 4)
 , -2, 4 2

4- (3 1)
 ”, 3 - ” (5, 17 20 .) 3 (10, 18 28 .)
).

8:

	15	10	12	9	0	4	8	0
	14	7	4	3	1	2	0	1
(n=90)	29	17	16	12	1	6	8	1

106
 (29% 365-), 50 56 .
 (/)
 .64 -1 (60,4% -), 42-
 -2 (38,6%). (.9)



9:

40
 34,5 (42 . 27), 19 .

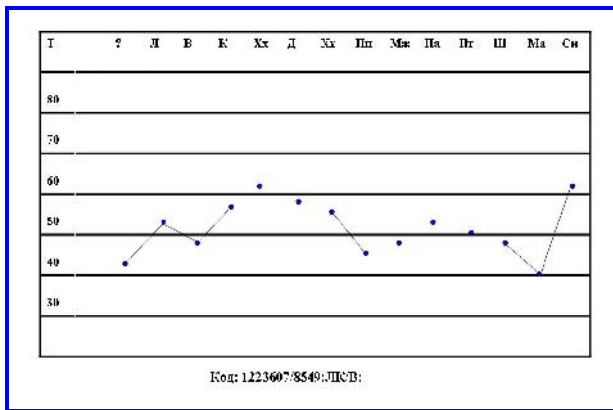
9,3 . (12, - 5,6).

); (MMPI („ ”))

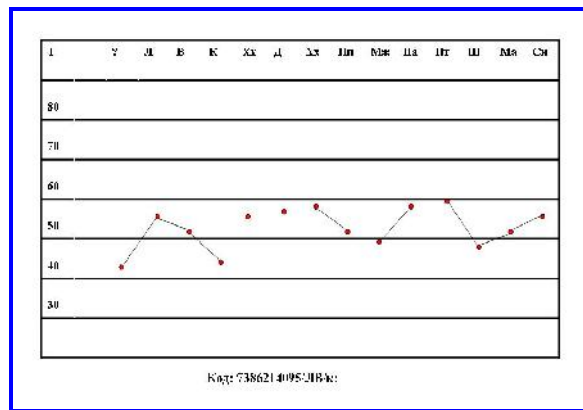
Rosenzweig („ -)

(15%) 34 (85%) 6

. (.10 11)



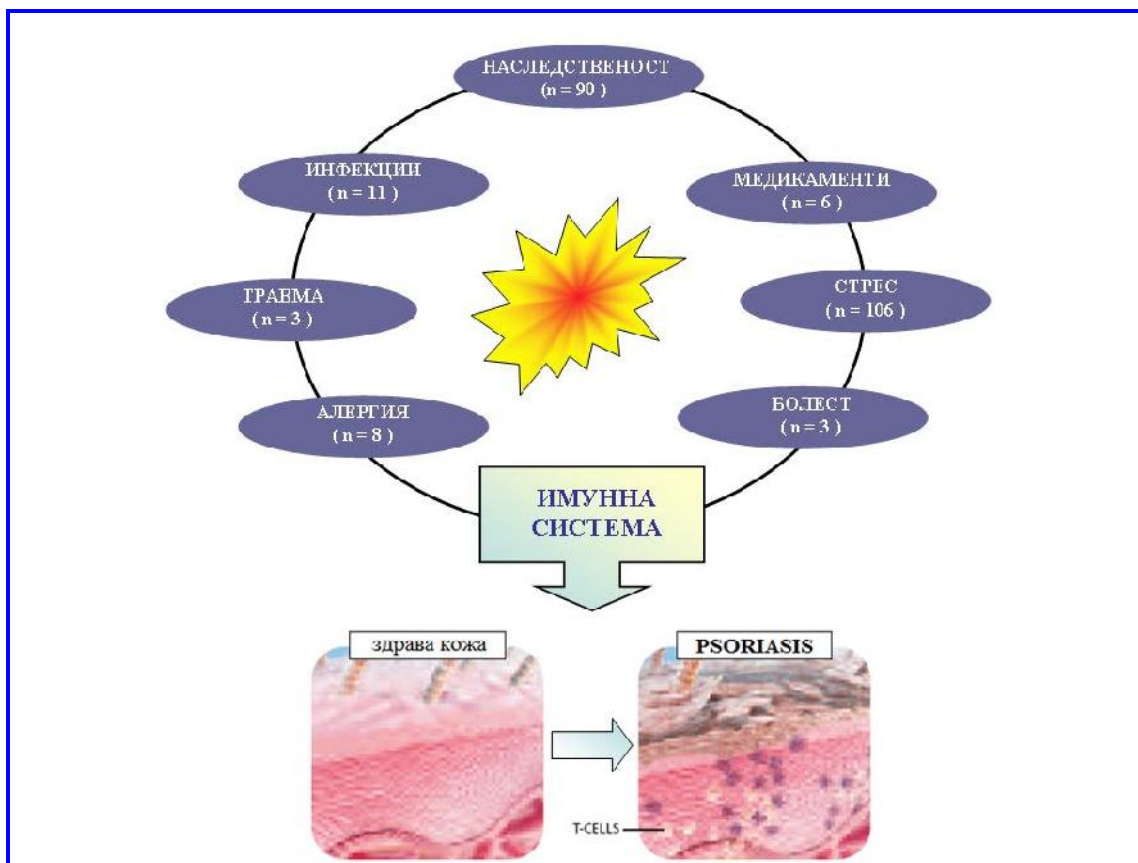
10: MMPI ()



11: MMPI ()

9 -1 (5 4 , , 20 .. 11 ,

), 2- -2 (1 54 ., .
1 51 .,
).



12:

1.4.

()

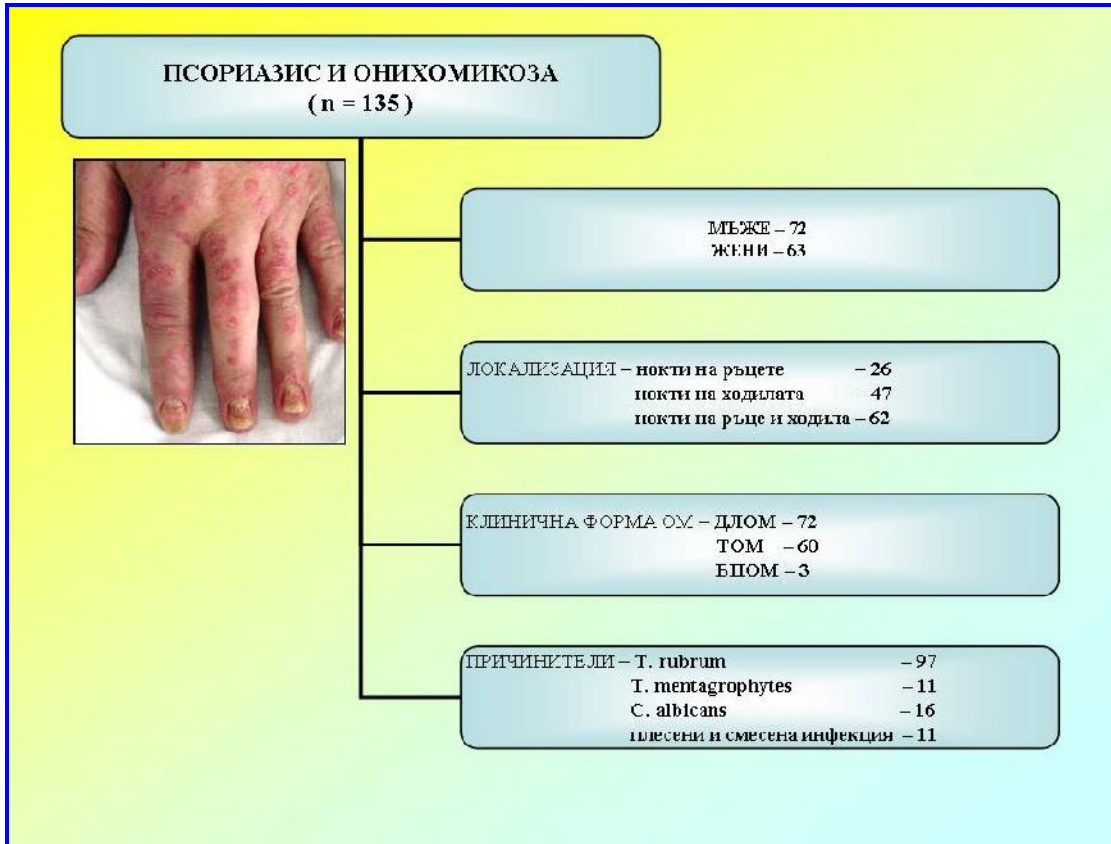
epidermidis, S. haemolyticus, S. aureus, Proteus spp., Pseudomonas spp., E. coli, 17 – S.

187- , 135 (72,2%), , 197 .

. (.13)

128

- 4,66 (.9)



13: - ; - - ;

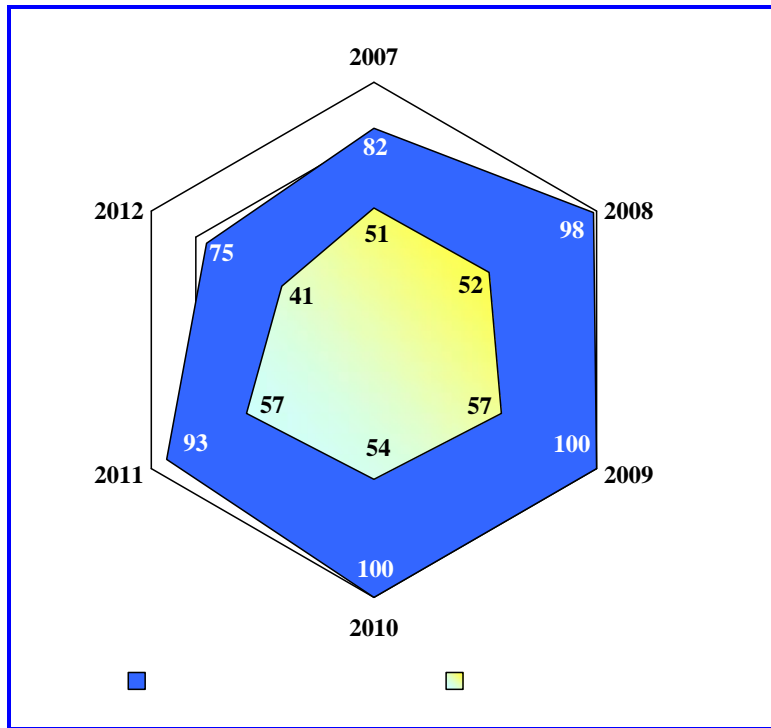
9:

	OR	95%CI	
		Lower	Upper
	4,66	2,89	7,51

2.

2.1.

312 , , 56,93% 247. (.14 .10)

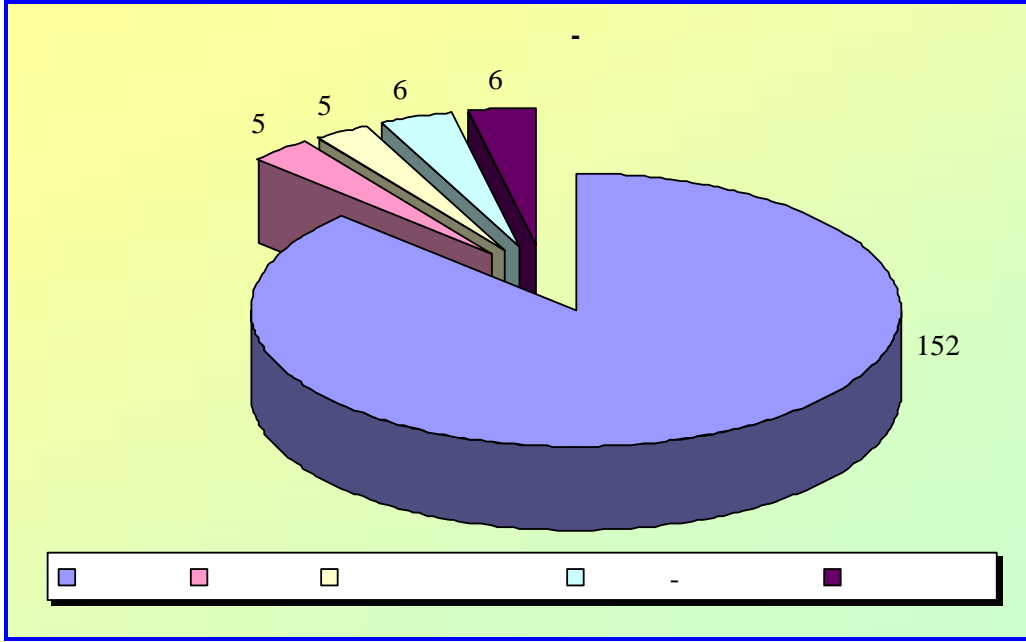


14:

10:

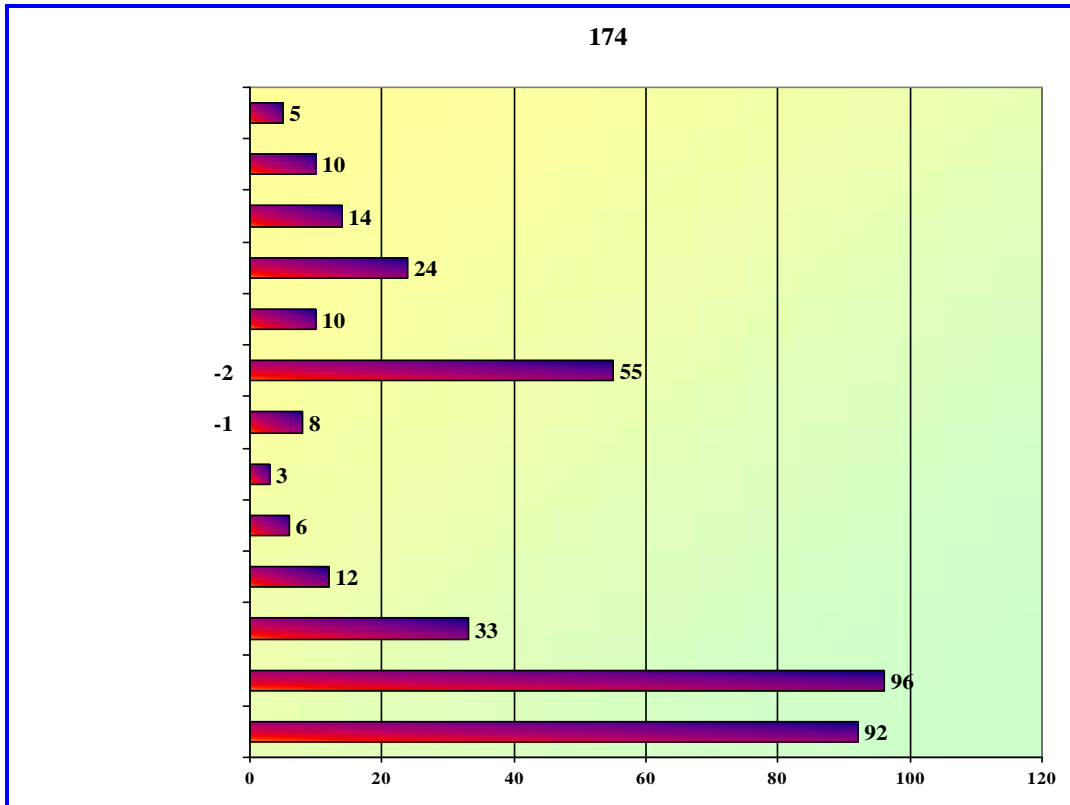
2007	297	82	51
2008	312	98	52
2009	306	100	57
2010	266	100	54
2011	253	93	57
2012	118	75	41
100 %	1552 100 %	548 35,3 % (1552)	312 56,93% (548)

174 (47,7% 365),
 31 82 . (58); 110 (63,2% 174-)
 37 82 . 64 (36,8%) 31 80 .
 (-10), -
 - 152 (87,35%). (. 15)
 (96,
 - 2 55, 33,
 12), (92-).
 - 174,
 1 . (.16)



15:

174



16:

0 - 17

30

70

33), -2 91 (60 31 39). (.11) -1 83 (50
 -2 - 8; 9 -1 - 8 -2 - 1). (30 -1 - 22 -2
 2- () , , .

11:

	-1		50	33	83
		%	60.2%	39.8%	100.0%
		%	45.5%	51.6%	47.7%
	-2		60	31	91
		%	65.9%	34.1%	100.0%
		%	54.5%	48.4%	52.3%
			110	64	174
		%	63.2%	36.8%	100.0%
		%	100.0%	100.0%	100.0%

19 -1 12 -2). (.12) (32,2%) - 25 (-1 11, -2 14) 31 (56

12:

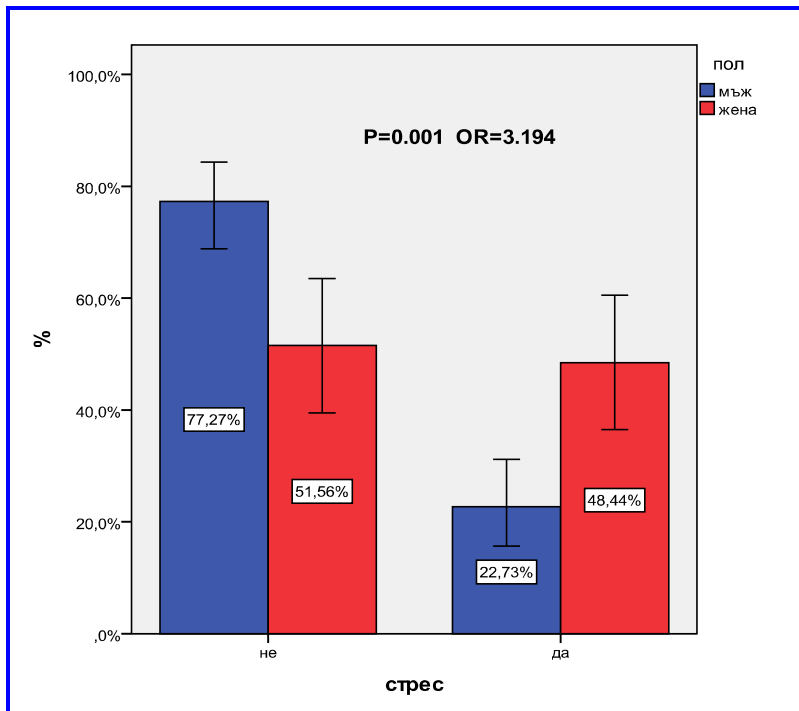
			85	33	118
		%	77,3 %	51,6 %	67,8 %
			25	31	56
		%	22,7 %	48,4 %	32,2 %
			110	64	174
		%	63.2%	36.8%	100.0%

() , (Fisher's Exact Test - =0,01),

. (.13 .17)

13:

	Value	95% Confidence Interval	
		Lower	Upper
Odds Ratio (/)	3.194	1.646	6.196
	174		

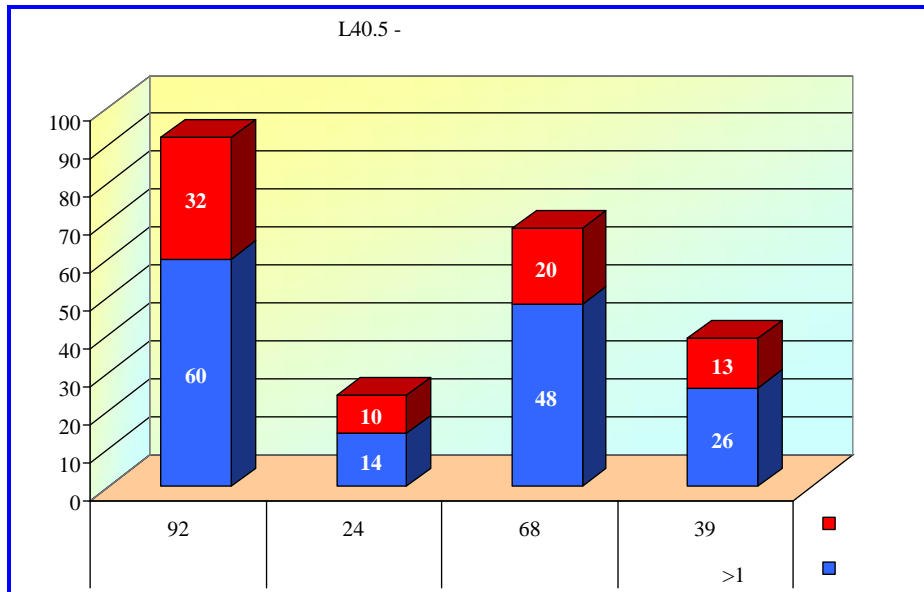


17: ,

2.1.1.

()

, , / 6 40%
 , -10 (L40.5;
 07.0– 07.3*; M09.0*). 25,20% 365
 , 92-
 24- , 247 52,95% 174
 68, 39
 – 60- (65,2%) 32 (34,5%). (.18)
 . ANOVA
 (= 0,001), (=
 0,0001) (.14)



18:

14:

			df	F	p
*		(Combined)	1	10.896	.001
			173		
*		(Combined)	1	13.043	.000
			172		

60 (-1 - 60-
 , -2 - 32).
 = 0,012)

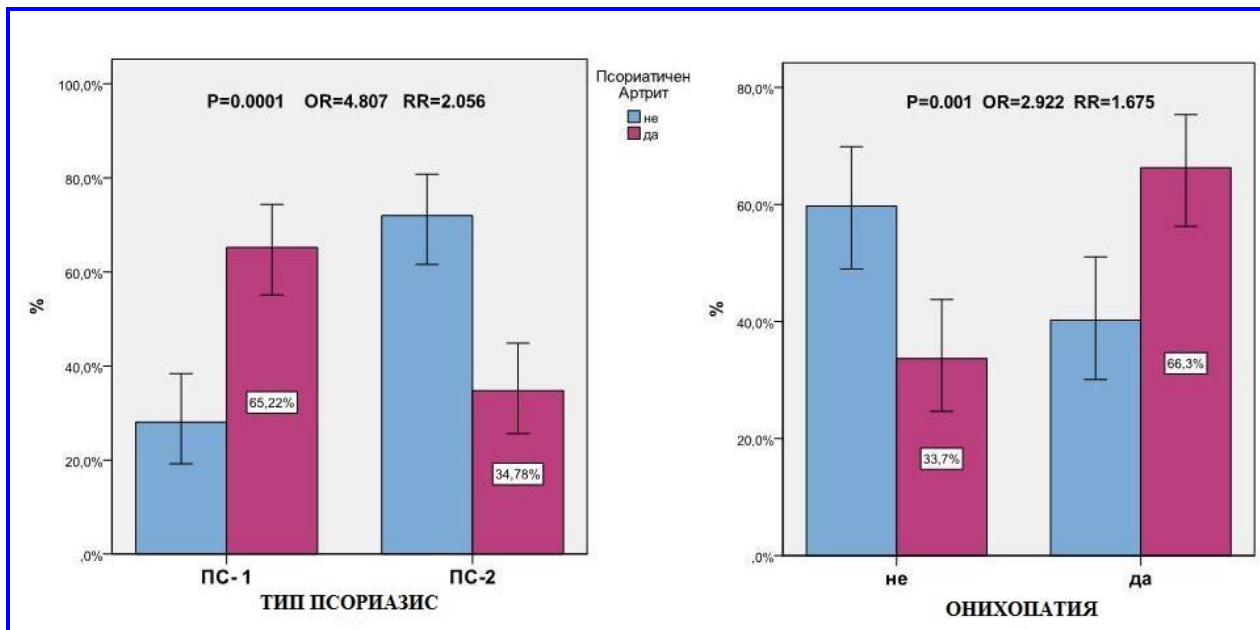
3 - 44 ; 45 - 59
 45 - 59 . (Pearson ²;

174

-1 (OR RR). (.15 .19)

15:

			P (Pearson Chi-Square)	P (Fisher's Exact Test)
-1	27,7 %	72,3 %	0,0001	0,0001
-2	64,8 %	35,2 %	NS	NS
	82,5 %	18,5 %	NS	NS
	65 %	35 %	NS	NS
	35,1 %	64,9 %	0,001	0,001



19:

(DSA) , (30%)
 Fisher's Exact Test- (p < 0,0005)
 „
 Candida albicans. (.16)

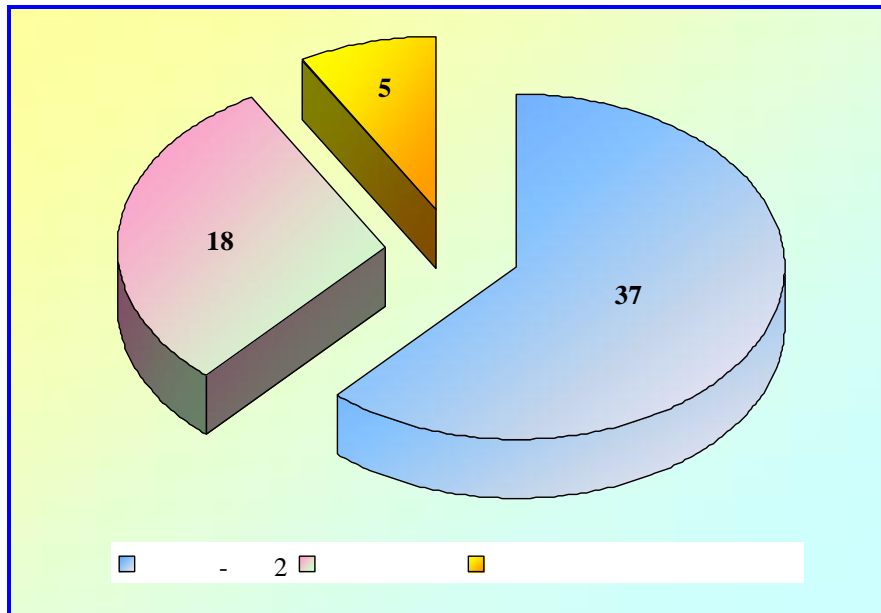
16:

DSA			P (Fisher's Exact Test)	
T. rubrum	87	10	97	NS
T. mentagrophytes	6	5	11	NS
C. albicans	0	16	16	<i>p < 0,005</i>
	11	0	11	NS

2.1.2.

2

174 55 (34, 5%) -2 (33 22).
 , - 18 (7
 -1 5 -2; 5 -1 2 -2) 5- (4
 -2 -1).
 - -1. (.20 .17)



20: 2

17: 2

	1 (n = 36)			2 (n = 24)		
	-2	-2		-2	-2	
	23	12	1	13	7	4
	14	7	0	7	5	4
	9	5	1	6	2	0

, , -2
 6,34 mmol/l (3,3 15,8 mmol/l). ANOVA
 -2
 (=
 0,003). (.19)

19: 2,

			df	F	p
*	-2	(Combined)	3	4.856	0.003
			173		
*	-2	(Combined)	3	.642	0.589
			172		

2.1.3.

(), (), ()
 (). (.20)

20: ,

	.	55.38	14.47
	N	78	77
	Std. Deviation	10.269	10.319
	.	59.71	16.91
	N	96	96
	Std. Deviation	9.247	11.105
	.	57.77	15.82
	N	174	173
	Std. Deviation	9.927	10.800
	.	56.84	16.22
	N	141	140
	Std. Deviation	10.092	11.042
	.	61.73	14.12
	N	33	33
	Std. Deviation	8.202	9.678
	.	57.77	15.82
	N	174	173
	Std. Deviation	9.927	10.800
	.	57.37	15.99
	N	162	161
	Std. Deviation	10.093	10.889
	.	63.17	13.58
	N	12	12
	Std. Deviation	4.970	9.671
	.	57.77	15.82
	N	174	173
	Std. Deviation	9.927	10.800

ANOVA

(.21)

21: -

		df	F	
*	(Combined)	1	8.518	0.004
		173		
*	(Combined)	1	6.683	0.011
		173		
*	(Combined)	1	3.872	0.051
		173		

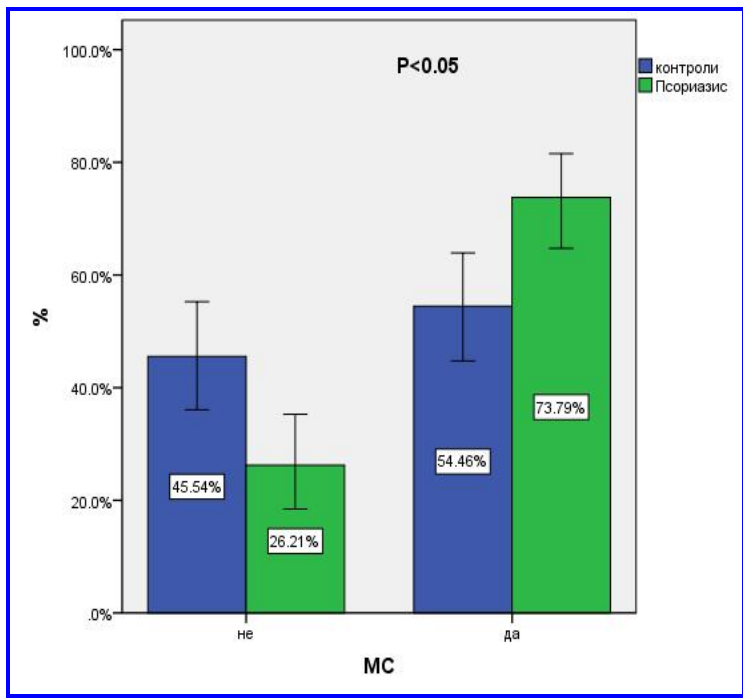
24 52 21 12 10
 + + + ,

2.1.4. ()

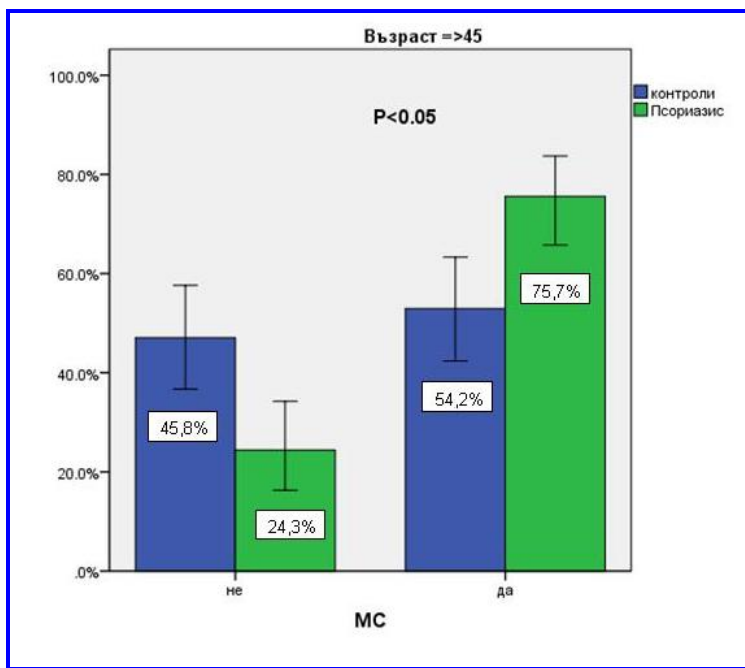
(.22) , - 73,8%
 54,5% (=0.05; OR=2.354).
 45 .
 45 .
 (= 0.002; OR =2.76). (.21 22)

22:

			46	27	73
		%	45.5%	26.2%	35.8%
			55	76	131
		%	54.5%	73.8%	64.2%
			101	103	204
		%	100.0%	100.0%	100.0%
45 .					
			33	18	51
		%	45.8%	24.3%	34.9%
			39	56	95
		%	54.2%	75.7%	65.1%
			72	74	146
		%	100.0%	100.0%	100.0%



21:



22:

45

($P=0.009$; $OR=2.632$).

45 ($P=0.0012$; $OR=2.793$). (.23)

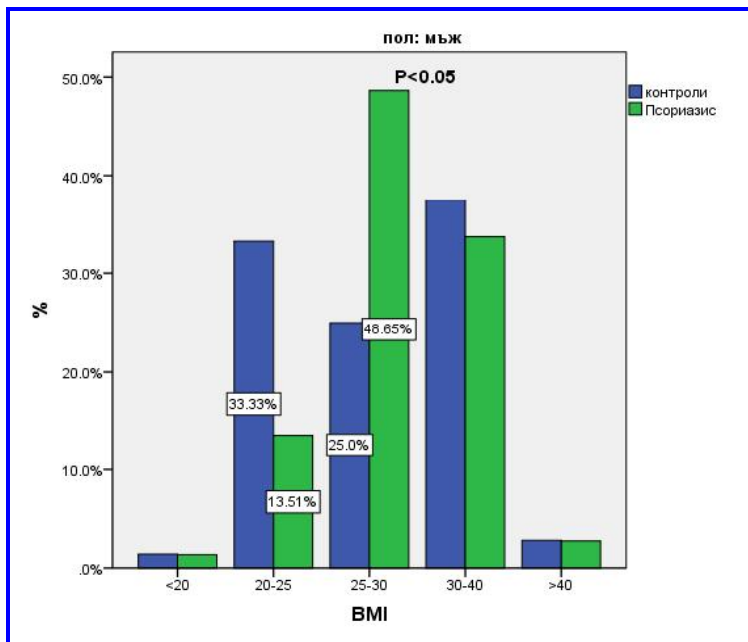
23:

45

			33	18	51
		%	45.8%	24.3%	34.9%
			39	56	95
		%	54.2%	75.7%	65.1%
			72	74	146
		%	100.0%	100.0%	100.0%
45					
			27	15	42
		%	48.2%	25.0%	36.2%
			29	45	74
		%	51.8%	75.0%	63.8%
			56	60	116
		%	100.0%	100.0%	100.0%

(, BMI)

45 . , – 44,2% 25%
 I - – 48% 25% (< 0.05).
 45 . – 53,3% , 25%
 (< 0.05). (. 23)



23:

BMI

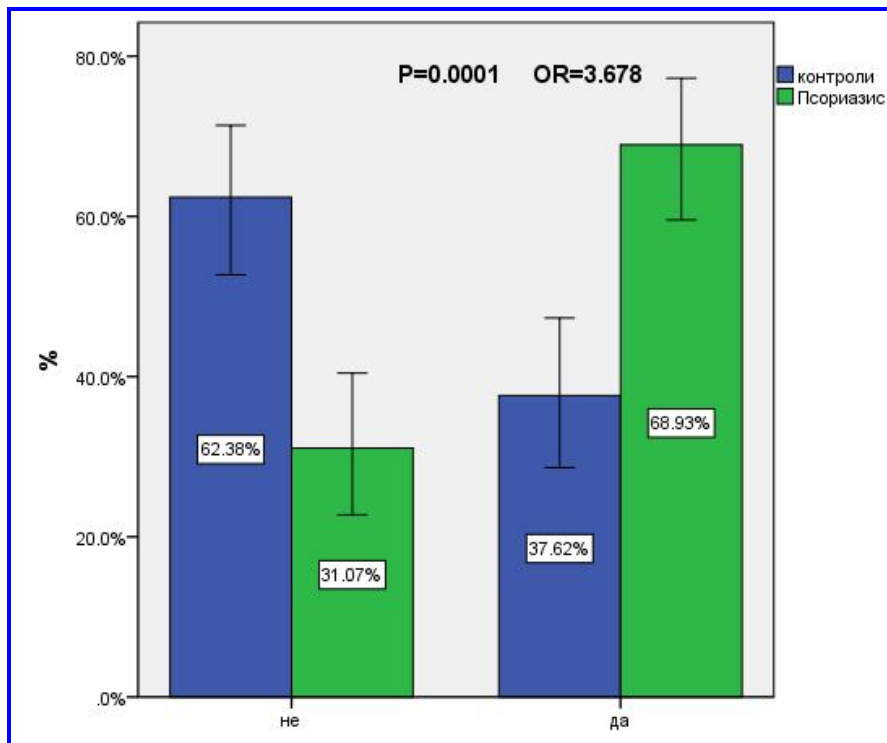
. (.24)

24:

(= 0,003)		(%)	53 (52.5%)	32 (31.1%)	85 (41.7%)
		(%)	48 (47.5%)	71 (68.9%)	119 (58.3%)
(45 .)		(%)	45 (52.9%)	23 (26.7%)	68 (39.8%)
(= 0,001)		(%)	40 (47.1%)	63 (73.3%)	103 (60.2%)

2

- . (.24)

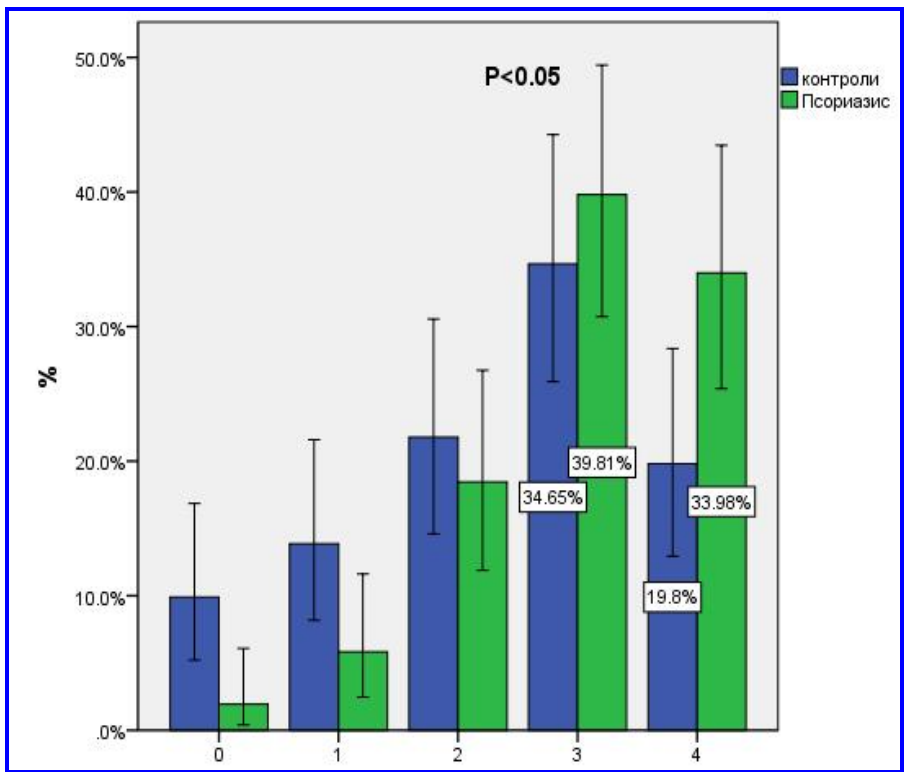


24: -2

5-

3 4

. (.25)



25

(NCEP: ATP III)

2.2.

... , 2012 .

:

2.2.1. ... - 48 .

(.26)

: 2001 . ()

2 (220/140 mm Hg).

60-70 . 2005 .

, 2007 . , 2009

, 2010 .

, - ,

2011 . , 60%

. () .

- 150 . 500 .

: 148 .. - 51,3; , -
 , 5 30 . , ;
 . PASI - 24,4; BSA - 3 (30 - 49%
) DLQI - 23.
 : , - - 636 μmol/l (. 214
 - 476); , - ,
 Candida albicans.
 : Psoriasis - ; -
 (, , - , -2, Obesitas III .) -
 ; Obs. /



26:

(1 - . . .)

2.2.2. . . . - 65 .. . (. 27)
 : 35 (.
 100-120/140-180 mm. Hg). 1990 .
 2001 .
 2003 2007 . 2 , .
 . 2008 .
 ,
 . ,
 „ ” 2010 .

91% ()
 : 84 ; - 153 ; - 35,9;
 40 ; PASI - 10,2; BSA
 - 3 (30 - 49%) DLQI - 19.
 : ;
 - S. aureus E. coli.
 : Psoriasis ; Obs.
 ; (, , ,
 , Obesity III)
 - ; Hypothyroidismus idiopathica.



27: (2- . . .)
 Psoriasis

PASI, BSA (Body Surface Area, 4 -
 ,) DLQI .
 IDF (International
 Diabetes Federation), NCEP: ATPIII (National Cholesterol Education Program Adult Treatment
 Panel III) American Heart Association/National Heart, Lung, and Blood Institute
 (AHA/NHLBI) - V BMI () -
 30 / 2 .

4
 . (.25)

25:

(Kassi ., 2011)

		• • •	• • •
()	94 80	117	102
	> 1,7 mmol/l	2,30 mmol/l	1,6 mmol/l
HDL – Cholesterol	< 1,03 mmol/l < 1,29 mmol/l		
	> 5,6 mmol/l 2	7,6 mmol/l 2	4,96 mmol/l
	130 / 85 mm Hg	160 / 110 mm Hg	180 / 110 mm Hg

- 3 5-
 - - , 48-
 , (- 7,6 mmol/l
 7,9 mmol/l),
 Wakkee . (2007) Pearson .(2012).
 Antonelli .
 (2006),

3.

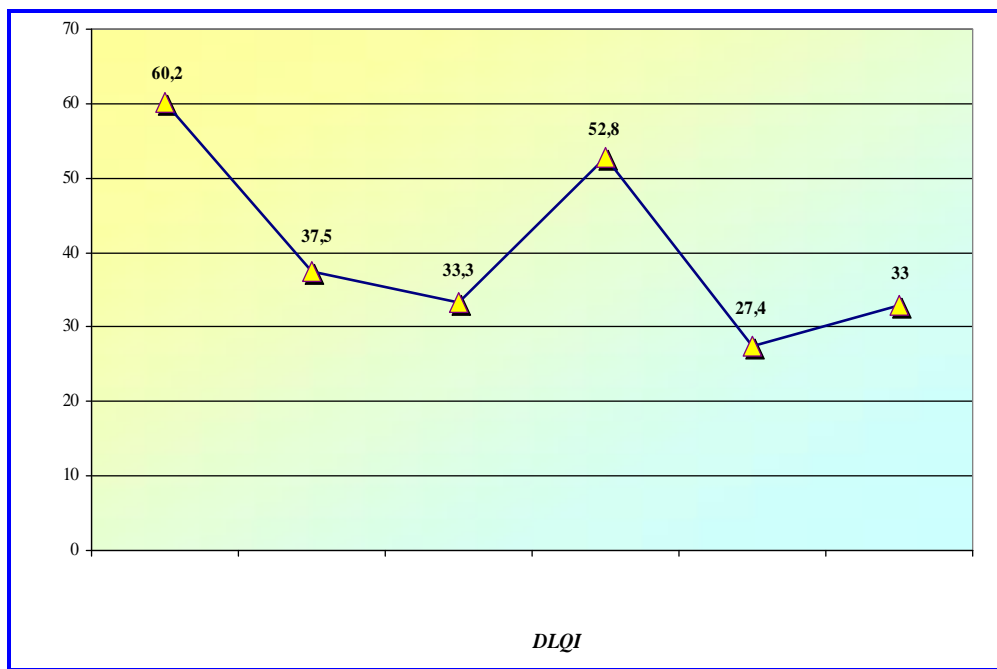
(QoL,)
Dermatology Life Quality Index (DLQI),
 . 10 , 6
 () – « », « », «
 », « » « ».
 DLQI 30.
 - (0-1
); (2-5); (6-10); (11 – 20)
 () (21 – 30).

PASI 123 (DLQI
 2007 – 2011)
 DLQI (12.06 ± 7.101) (81
 42 , 65,85% 34,15%), (50,31),
 (- 10 – 15), PASI (26.93 ± 14.67).
 PASI (29.34 ± 15.14 ,
 22.27 ± 12.61 ; = 0,01).
 3.43 ± 1.087, ,
 (,, ”). (.26)

26: PASI

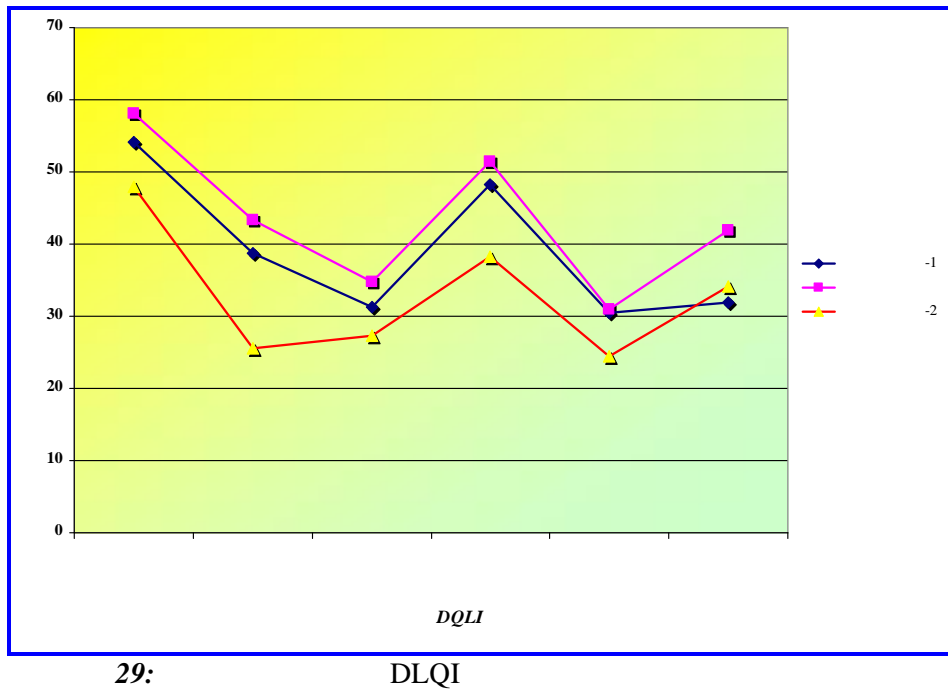
	(N=81)	(N=42)	P=
(± SD)	49.5769 ± 15.4386	51.7317 ± 14.6663	0.4633 (NS)
PASI (± SD)	29.3444 ± 15.1465	22.2786 ± 12.6151	0.0107 *

DLQI , -
 1 ,, ” – 60,2%, 4 ,, ” –
 52,8%, 2 ,, ” – 37,5%, 6 3 (,, ” ,, ”)
 – 33 - 33,3% - 5 ,, ” – 27,4%. (.28)



28: DLQI –
 123

3 , , 1 (n = 47)
 , , 2 (n = 41) -
 35) - () 3 (n =
 , 6 (2012 . 2012 .)
 - () DLQI.
 5 DLQI „ ”.
 , (7
 2). DLQI - „ ” ”.
 , 6 „ ”,
 . (.29)



81 41) , (41 - 29 12 (123 -).
 , .
 ”

(= 0,013) ,,

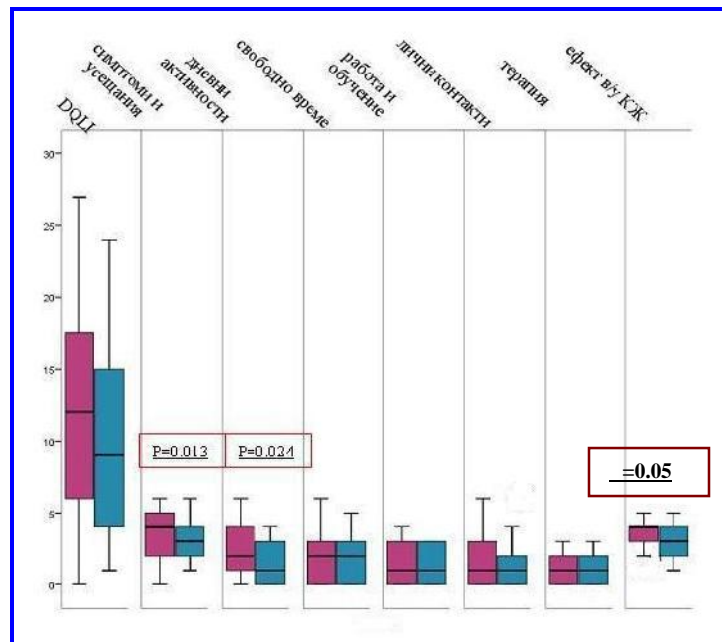
” (= 0,024),

, (.27

.30)

27:

										P
	Mean	SD	SE	Mean	SD	SE	Mean	SD	SE	
PASI	26.932	14.6710	1.3228	31.751	11.51	1.7984	28.137	14.072	1.0988	.05
DLQI	12.06	7.101	.640	9.73	6.599	1.031	11.48	7.032	.549	.06
	3.61	1.687	.152	2.88	1.364	.213	3.43	1.639	.128	0.01
	2.25	1.840	.166	1.54	1.398	.218	2.07	1.764	.138	0.02
	2.00	1.802	.162	1.63	1.479	.231	1.91	1.730	.135	.24
	1.59	1.324	.119	1.15	1.256	.196	1.48	1.317	.103	.06
	1.64	1.852	.167	1.46	1.583	.247	1.60	1.785	.139	.58
	.99	.996	.090	1.02	.880	.137	1.00	.966	.075	.85
/	3.43	1.087	.098	3.05	1.048	.164	3.34	1.087	.085	.05



30:

DLQI

- () ()

() ” 3.34 ± 1.08).

V.

1.

2007 „ 2012 . 1552 (764
 806 ; 48,1% 51,9%) , 548 (35,3%)
 247 – 347 201 . - 35,5%,
 5 . 548- 247 365 ,
 - 63,3% : 36,7% (1,7 : 1).

- BSA > 3 (3,6
), PASI > 10 (21,44) DLQI > 10 (11,66).

B.A. Adam V. Meenu . E.M.Farber M.L.Nall
 J.M. Gelfand , O.Stevenson I.Zaki,
 M.Stahle F.Sanchez
 E.Christophers
 BSA > 3,
 (OR = 1.37, 95% CI: 1.14 – 1.64).

45 – 59 . - (103- 43
), 18 – 44 . (61 22-). (75 26) 60

365) , (18 60 , 63%

V. Meenu : =
 1,3:1 67 % B. Sinniah . (2010) 531 , 3
 : 1,6:1; - 40 – 60 ,
 20 – 40 . (86%).

80- . 20- , ” ” ” ”
 T. Henseler E.Christophers: „Psoriasis of
 early and late onset: characterization of two types of psoriasis vulgaris” (1985).

2006 . A.L. Neimann .

75% 1” 40 / 16 22
 57 – 60 ” – 2” 40 . (

197 (54%) 365 , 168 (46%)
 -1 109 (55,3%) 88
 -2. (44,7%), -2 107 (63,7%) 61 (32,3%). 365
 548 , 266 282
 37,7%) 38 -2 (28 10 99 – 61 -1 (38 23 ; 62,3% :
 ; 73,7% : 26,3%).
 -1
 ()
 -2,
 -1,
 Henseler Christophers,
 -1
 -2.
 (),
 E. Christophers (2012).
 10 30%
 (54%)
 B.Sinniah . (2010): (.28)

28:

	<i>B.Sinniah</i> . (2010)	(2012)
	21%	54,5%
	60,2%	86%
	16%	77,8%
	44%	84,1%
	12%	25,7%
	12,4%	13,4%

Armesto, 2011 (2007 – 661 3 47,7% PASI 12,82 8,22), - (20,30 13,94), - (74,1% 65,5%), (53,7% 42,8%) HLA-Cw0602 (33% 50.3%). (29,7 11,5) -

() () 365 35 (18 Psoriasis palmo-plantaris 5%, 48 Psoriasis guttata – 13,13%, 7 Erythrodermia psoriatica – 1,9% 262 – 72%) 30 (2- Psoriasis pustulosa generalisata – 0,06% 28 Pustulosis palmo-plantaris – 7,7%).

+ ; - + ; + ; + ; V. Meenu . (2010) D.J.Pearce . (2005). (.29)

29:

	<i>V. Meenu</i> (2010)	<i>D.J. Pearce</i> (2005)	(2012)
	57%	42%	63,3%
	43%	58%	36,7%
Psoriasis placata	44%	51%	72%
Psoriasis guttata	7%	-	13%
Ps. palmo-plantaris	19%	9%	5%
Erythrodermia	6%	-	2%
Psoriasis pustulosa	2%	-	7,8%
Arthropathia psoriatica	-	12%	25%

30%

Cw6. PSORS PSORS1 – 9 HLA- (TNF-) (VEGF),

1 HLA-Cw6, DR7, B13 B57, HLA-Cw6
 1
 2.
 ” ” ” ”,
 (24,65%)
 -1 74 (46 28), -2 16 (12 -58 32 . 90
 53 , , (46
 -1 7 -2). (,)
 16 -1 8 -2.
 (12 -1 1 -2). 16- -
 2 3 , - 1 ,
 - ,
 40 E.M. Farber
 M.L.Nall (1974), (,),
 - , ,
 , ,
 ,
 PSORS1.
 (50 .,
) PSORS1, , 6 9
 48 (13,15%) , -1 , ,
 19 . 2 4 -2.
 ,
 ” ” + + - ”,
 5, 17 20 .) 3 (10, 18 28 .), 3 (40
 (. . -1),
 ,
 T.Henseler E.Christophers
 R.Seville (1977), Griffiths . (2001) Mallbris . (2005)
 ()
 .
 . Naldi . (2005) ,
 . 1998 . Fortune . , 60%
 , Zachariae . (2004),
 71% , 66%
 , Picardi . (2005)

- Picardi 106 (29%), 365-
 80%.
 R.Seville - 39% 29% igre da Silva - 40 -
 2/3 .Farber,
 11 9 -1 (5 4
 54 20), 2- -2 (1 1
 51).
 Telfer 63% 10% . Mallbris
 9- -1.
 197 (54% 365
 30%
 Dermasel selective agar 135 (72,2% 187-
),
 (

Trichophitum rubrum).

	Majmudar	Salomon	Szepietowski	Larsen	Stander
	135 (69,23%)	31 (83,78%)	195	34	
29 (85,29%)	37	31 (83,78%)	195	34	
:	- 72 (53,333%),	- 60 (44,444%)			- 3 (2,222%).

Methotrexat - NAPSI, Leibovici, Salomon

Psoriasis Area and Severity Index (PASI)

(4). - (0), (1), (2), (3)
 - 21,44
 PASI

(NAPSI). - Nail Psoriasis Severity Index
 (p < 0,00001)
 - NAPSI,

2.

174 (47,7%) 365),
 31 82 . (58 .) - 110 (63,2%) 37 82
 64 (36,8%) 31 80 . -
 - 152 (87,35%). -
 96 (55,17%), 92- (53%),
 - 2 55 (31,6%), 33 (19%),
 24 (13,8%), 12 (6,9%).
 . (. 30)

30:

	N					-1	-2	
Mrowietz (2006)	581	21,9%	5,5%	-	4%	1,9%	12%	-
Thomas (2009)	100	15%	4%	-	-	-	12%	7%
Mehta (2009)	3603	23,9%	-	3,2%	2,5%	-	7,5%	22,5
Armstrong (2011)	61	78%	54%	37%	-	-	31%	100%
Lin (2011)	480	14,6%	-	-	-	-	7,3%	-
(2012)	174	55,2%	19%	6,9%	3,4%	4,6%	31%	30%

Armstrong . (2011)
 61

-2
 National Psoriasis Foundation (2012)

58%

57%

2.1.

6 44%. National Psoriasis Foundation 2012 .
 30% ,
 97% 157% 90%
 Th1 Th17
 TNF- , IFN- , IL-23, IL-17, IL-22
 ICAM-1. -
 TNF- , IL-1, IL-6 IL-8.

(, , ,) ,
 - 92- , 24 5 68
 39 2 -1
 (60, 62,5%), -2 - 32 (37,5%).
 (= 0,0001), (= 0,001),
 (= 0,0001) Gladman (=0,001), 45 - 59 ,
 . (2006). (2005), Madland . (2005) Gottlieb
 31

” - ” (= 0,0005),
 Candida albicans (p < 0,00001).
 , (2003) 88 , Salomon
 - - (37%), (31,5%) (31,5%). Larsen (12,7%),
 Candida krusei, 10 79
 C. albicans

Candida- ,
 (, ,) -2,
 10 ” - 1000

2.2.

Sterry . (2007)
 - , 55,17%
 71 (68,9%)
 48 (47,5%),
 (p=0,003; OR=2,45).

45 .
 45 ..
 (=0,001; OR=4,02).
 2010 . Prey .
 . (. 31)

31: Prey (- OR=2,45
 OR=4,02)

				OR
Neimann (2006)		131560	479317	1,25
Gelfand (2006)		556995	127139	1,26
Cohen (2008)		16851	48677	1,30
Sommer (2006)		625	1044	3,27
Gisoni (2007)		338	334	1,06
Naldi (2008)		560	690	0,80
(2012)		103	101	4,02

2.3.

TNF- , Th-1
 TNF-
 TNF- IL-6 CRP,
 CRP
 -2 (= 0,003) (= 5
 0,001) AD Cohen . 2007 ..
 6 (- 2012 .; 75)

2012) 9 (18) , -2, (2011 –
Boehncke . (2007).
Neimann . (2007), -2 (– OR 1.62),
69% 38% (< 0,0001; OR 3.678).
Prey .: (.32)

32: Prey
(– OR=3.678)

					OR
Neimann (2006)		131560	556995		1,86
Shapiro (2007)		46095	1579037		1,27
Cohen (2008)		16851	74987		2,80
Brauchli (2008)		36702	36702		2,56
Sommer (2006)		581	1044		2,28
Gisondi (2007)		338	334		0,90
Naldi (2008)		560	690		1,10
(2012)		103	101		3,68

(), (, -), - CRP,
-2

2.4.

HDL-C

Henseler Christophers (1985)

50%

Standart Mortality Risk (SMR) – 1,5, Stern Lange (1988) PUVA.

Gisondi (2007)

(30,1% : 20,6%; OR 1.65 95% CI 1.16–2.35),

Azfar

Gelfand (2007) Azfar (2012) 108 132

430 716

2 (OR 1.46),

(73,8% 54,5% =0.05; OR=2.354),

45

(= 0.002; OR =2.76).

OR=2.793 45 =0.009; OR=2.632 =0.0012;

Prey ∴ (.33)

33: Prey (– OR=2,35)

					OR
Cohen (2008)		16851	46681		1,3
Sommer (2006)		625	1044		5,92
Gisondi (2007)		338	334		1,66
(2012)		103	101		2,35

2.5.

Setty . (2007)
 4000
 (UK General Practice Research Database)
 Huerta 2007 . Brauchli
 ” (560 690
 Neimann . (233),
 2009 . 2005 .
), Naldi .
 (OR – 2.2),
 (2005)
 (OR – 5.3). (277)
 BMI
 BMI
 Herron . (2005) Neimann . (2006), BMI
 > 30 () OR – 1.79, Naldi . (2005) BMI
 OR – 1.6 BMI – 25–30 () OR – 1.9
 BMI > 30.
 . (44% 25%
 BMI 25-30).
 45 .
 – 44,2% 25%
 (< 0.05), I - – 48% 25%
 45 . (53,3%
 25% ; < 0.05).
 – McKenna
 Stern (1997), Mabuchi . (2012)
 a Prey . (253)

3.

DLQI (Mean/SD), PASI (Mean/SD)

(Finlay Khan 1994 .)

QoL 123

DLQI (Mean/SD), PASI (Mean/SD)

12,06 (81 42), (50,31),

(10 – 15), PASI (25,24).

10

(164)

– 123 41 (.34)

34: DLQI PASI

			(/SD)	(%)	(/SD)	DLQI Mean/SD	PASI Mean/SD
Mazzotti (2001)		359	46,0 (16,3)	57,4	12,0 (11,6)	8,7 (6,0)	-
Mazzotti (2002)		900	-	60	12,1 (11,9)	8,8 (6,1)	8,2 (5,6)
Augustin (2005)		1511	50,5 (14,9)	57,8	17,6 (14,5)	8,6	12,0
Schmitt (2005)		332	42,7 (11,5)	38,8	-	10,8 (7,1)	9,5 (8,9)
Radtke (2007)		2009	44,3	-	-	7,5	10,4
Lin (2011)		480	42,8 (14,8)	67,5	11,1 (9,3)	9,16 (6,3)	10,5 (9,9)
(2012)		164	49,6 (15,4)	65,8	11,5 (7,03)	11,5 (7,03)	28,1 (14,0)

PASI

3,43,

QoL (7.2 ± 1.2) DLQI (3.6 ± 3.2) (Mabuchi, 2012)

102 77 25 (McKenna, Stern, 1997)

PASI (22.27 : 29.34; = 0,01), 65,8% : 34,2% (A. Finlay, 2005)

10. 123 (Krueger, 2001), Koo (2003) Menter (2008)

” - 62,5% ” - 52,8% (” (,the rule of tens”), - PASI > 10, BSA > 10% DLQI >)

” (= 0,013) ” (= 0,024)

Tung-Yi Lin 2011 480

6

” (”)

).
 . (.35)

35:
 Karada . (2012) Tung-Yi Lin . (2011)

	Karada .	(2012)				Tung-Yi Lin .	
	(2012)					(2012)	
			SD		SD		
DLQI	14,55	11,66	7,257	9,73	6,599	9,16	6,3
	4,22	3,26	1,687	2,88	1,364	2,63	1,46
	3,72	2,32	1,968	1,54	1,398	1,84	1,55
	3,1	1,87	1,469	1,63	1,479	1,73	1,54
	1,23	1,45	1,248	1,15	1,256	0,84	1,07
	1,22	1,83	1,845	1,46	1,583	1,18	1,39
	1,05	0,96	0,932	1,02	0,88	0,93	0,93

Karada . (2012),
 QoL 291
 40 (BSA > 10%).
 (DLQI- 14,55),
 (DLQI-13,55) (DLQI-12,65),
 - 1 2 (,, ”), 3 4
 (,, ”).
 ”) ”
 - Krueger ., Koo . Menter .
 DLQI,
 (,, ”) ”

„ ” – , , 0,99 ± 0,99
 1,02 ± 0,88 , . . . ,
 (Q L , , DLQI
 , ,
 . D3 , ,
 SUT, PUVA, Re-PUVA) (UVB,
 -
 , , , , ,
 , , , , ,
 PASI, - ,
 :

АНКЕТНА КАРТА (ФИШ) НА БОЛЕН ОТ ПСОРИАТИЧНА БОЛЕСТ №...

ИМЕ: (брой хоспитализации)

Възраст:

Пол: мъж - 1 ; жена - 2

Давност на заболяването:

Тип: ПС-1 - 1; ПС-2 - 2

ръст тегло талия ВМІ: 0 - до 20; 1 - 20-25; 2 - 25-30; 4 - 30-40; 5 - над 40

Причина за заболяването:

0 - не може да определи

1 - фамилност да - 1.1; не - 1.2 (ако „да” - да се определи родственика.....)

2 - стрес да - 2.1; не - 2.2 (ако „да” - да се определи събитието.....)

3 - медикаменти да - 3.1; не - 3.2 (ако „да” - кой медикамент

4 - системна инфекция да - 4.1; не - 4.2 (ако „да” - д-за:

Тежест на заболяването: 1 - лек ; 2 - умерено изразен; 3 - средно тежък; 4 - тежък

PASI:

BSA: (.....%)

Клинична форма: 1 - с плаки

4 - пустулозен

7. палмо-плантарен

2 - гутатен

5 - инвертен

8. инветерират

3 - еритродермичен

6 - с онихопатия

9. пал-пл. пустулоза

Начин на живот:

Тютюнопушене: 0 - не; 1 - да (колко цигари дневно -

Употреба на алкохол: 0 - не; 1 - да (колко мл. дневно -/ вид алкохол.....)

Адинамия: 0 - не; 1 - да

Провеждана до момента терапия - 1 - МТХ; 2 - сКС; 3 - лКС; 4 - ретиноид; 5 - вит.Д3

4 - КНИ; 5 - УВЛ; 6 - морелечение; 7 - други (.....)

Коморбидност:

1. АРТРОПАТИЯ: 0 - няма ; 1 - да

2. ХИПЕРТОНИЯ: 0 - няма ; 1 - да (RR/.....mmHg; ЕКГ; холтер; ЕхоКГ)

3. ОБЕЗИТЕТ: 0 - няма ; 1 - да

4. ДИАБЕТ: 0 - няма ; 1 - тип 1 ; 2 - тип 2

5. ДИСЛИПИДЕМИЯ: 0 - няма ; 1 - да

6. ИБС: 0 - няма ; 1 - стенокардия ; 2 - миокарден инфаркт

7. КОЖНИ ИНФЕКЦИИ: 0 - няма ; 1 - да

Вид на инфекцията: 1 - стафилокок ; 2 - стрептокок

3 - дерматофит ; 4 - кандида

8. МАЛИГНЕН ПРОЦЕС: 0 - няма ; 1 - да

Вид на процеса: 1.1 - НМКТ ; 1.2 - карцином

1.3 - лимфом ; 4.1 - други (д-за:.....)

9. ДРУГИ: 1 - подагра ; 2 - ПФС ; 3 - М. Крон ; 4. друга (.....)

3 - ХОББ ; 4 - други (д-за

10. ДЕПРЕСИЯ: 0 - няма ; 1 - да

Качество на живот: DQI

.....

1 - Симптоми и усещания (въпроси 1 и 2)

2 - Дневни активности (въпроси 3 и 4)

3 - Свободно време (въпроси 5 и 6)

4 - Работа и обучение (въпрос 7)





5 - Лични контакти (въпроси 8 и 9)

6 - Лечение на заболяването (въпрос 10)

Дата:

Лекар:

PASI

	0% 50-69%	0-10% 70-89%	10-29% 90%	30-49%		0% 50-69%	0-10% 70-89%	10-29% 90%	30-49%			
	0	1	2	3	4		0	1	2	3	4	
	0	1	2	3	4		0	1	2	3	4	
	0	1	2	3	4		0	1	2	3	4	
	0% 50-69%	0-10% 70-89%	10-29% 90%	30-49%		0% 50-69%	0-10% 70-89%	10-29% 90%	30-49%			
	0	1	2	3	4		0	1	2	3	4	
	0	1	2	3	4		0	1	2	3	4	
	0	1	2	3	4		0	1	2	3	4	
:												
:												

PASI	
-------------	--

Дерматологичен индекс за качеството на живот**DLQI**

Болница: Дата:

Резултат:

Име: Диагноза:

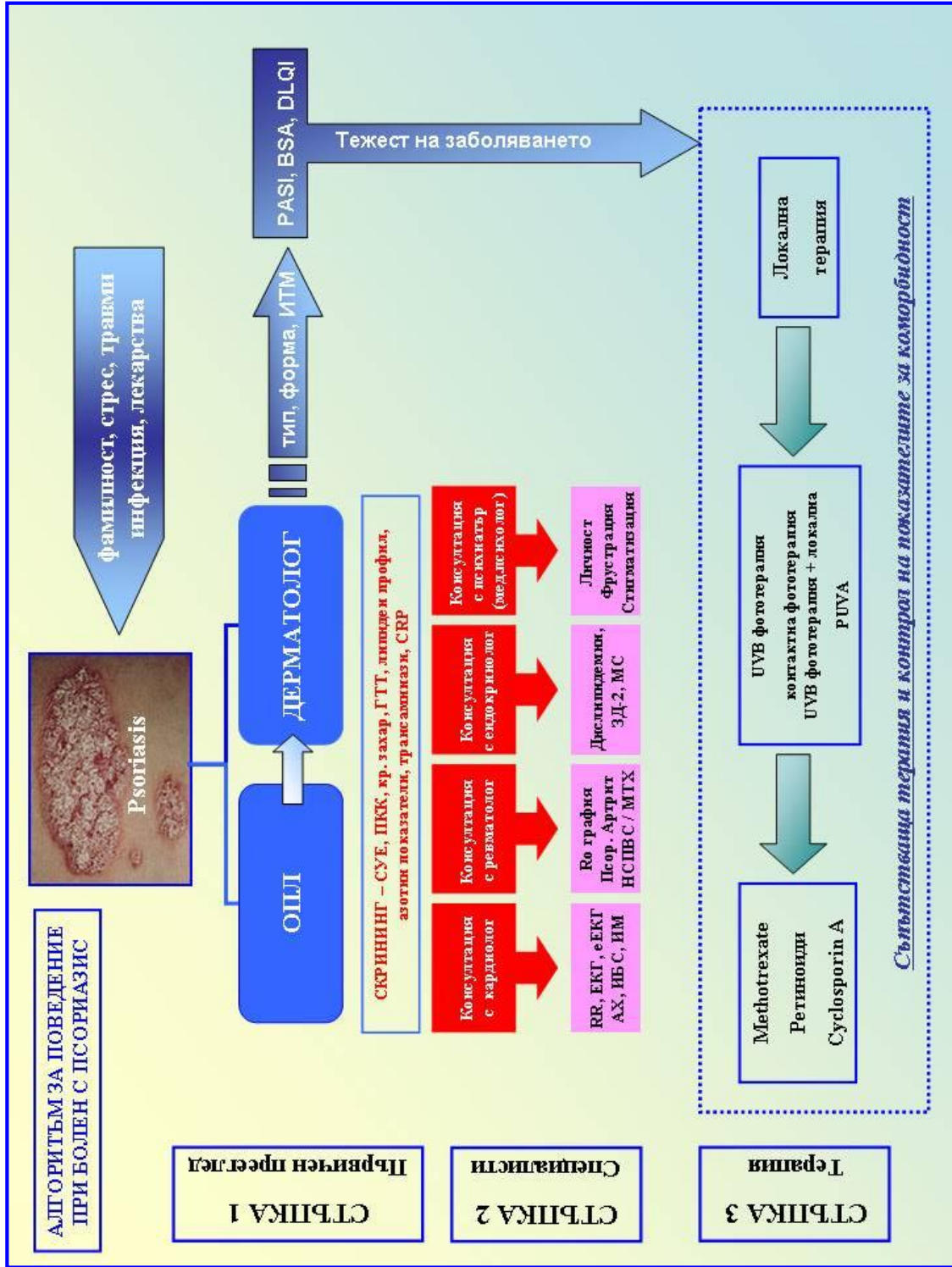
Адрес:

Целта на този въпросник е да измери до каква степен Вашите кожни проблеми са дали отражение върху живота Ви през ИЗМИНАЛАТА СЕДМИЦА. Моля маркирайте само едно от квадратчетата за всеки въпрос.

1.	До каква степен през изминалата седмица усещахте сърбеж, дразнене, болка или парене на кожата?	Много Доста Малко Въобще	<input type="checkbox"/> <input type="checkbox"/> <input type="checkbox"/> <input type="checkbox"/>	
2.	До каква степен през изминалата седмица бяхте смутен/а или притеснен/а заради състоянието на Вашата кожа?	Много Доста Малко Въобще	<input type="checkbox"/> <input type="checkbox"/> <input type="checkbox"/> <input type="checkbox"/>	
3.	До каква степен през изминалата седмица състоянието на Вашата кожа Ви попречи да пазарувате или да се грижите за дома или градината ?	Много Доста Малко Въобще	<input type="checkbox"/> <input type="checkbox"/> <input type="checkbox"/> <input type="checkbox"/>	Не се отнася до мен <input type="checkbox"/>
4.	До каква степен през изминалата седмица състоянието на кожата Ви повлия избора на дрехите , които носихте?	Много Доста Малко Въобще	<input type="checkbox"/> <input type="checkbox"/> <input type="checkbox"/> <input type="checkbox"/>	Не се отнася до мен <input type="checkbox"/>
5.	До каква степен през изминалата седмица състоянието на Вашата кожа се отрази на социалните Ви контакти и на начина, по който прекарахте свободното си време?	Много Доста Малко Въобще	<input type="checkbox"/> <input type="checkbox"/> <input type="checkbox"/> <input type="checkbox"/>	Не се отнася до мен <input type="checkbox"/>
6.	До каква степен през изминалата седмица състоянието на Вашата кожа Ви създаде трудности при спортуване ?	Много Доста Малко Въобще	<input type="checkbox"/> <input type="checkbox"/> <input type="checkbox"/> <input type="checkbox"/>	Не се отнася до мен <input type="checkbox"/>
7.	През изминалата седмица състоянието на Вашата кожа пречеше ли Ви да работите или учите ?	Да Не	<input type="checkbox"/> <input type="checkbox"/>	Не се отнася до мен <input type="checkbox"/>
	Ако отговорът е „не“, то до каква степен състоянието на кожата Ви беше проблем при работа или учене през изминалата седмица?	Много Малко Въобще	<input type="checkbox"/> <input type="checkbox"/> <input type="checkbox"/>	
8.	До каква степен през изминалата седмица състоянието на кожата Ви създаваше проблеми с партньора или с близки приятели или роднини ?	Много Доста Малко Въобще	<input type="checkbox"/> <input type="checkbox"/> <input type="checkbox"/> <input type="checkbox"/>	Не се отнася до мен <input type="checkbox"/>
9.	До каква степен през изминалата седмица състоянието на кожата Ви причини затруднения в сексуалния Ви живот ?	Много Доста Малко Въобще	<input type="checkbox"/> <input type="checkbox"/> <input type="checkbox"/> <input type="checkbox"/>	Не се отнася до мен <input type="checkbox"/>
10.	До каква степен лечението на кожата Ви през изминалата седмица Ви създаваше проблеми (например с това, че Ви е отнело много време или с това, че домът Ви е бил разхвърлян)?	Много Доста Малко Въобще	<input type="checkbox"/> <input type="checkbox"/> <input type="checkbox"/> <input type="checkbox"/>	Не се отнася до мен <input type="checkbox"/>

Моля, проверете дали сте отговорили на **ВСИЧКИ** въпроси. Благодаря!

©AY Finlay, GK Khan, April 1992 Разпространението на въпросника без разрешението на автора е забранено.



V.

1. (63,3%). - (1552); 18% (282) 1/3 99
(1 9);

2. - (43,4%) (365)
45 - 59 „ ,

3. , -1 54%. -
,
(78%), (55%) (51%). (85%),

4. - 25% , 5
-1. „ -1.

5. , -
25% , -

6. - 4,6
.

**Trychophytum rubrum,
- Candida albicans.**

7. 48% ()
,

8. - 45 - 59 „
3 -
5 - -1 .

9. -1. - 2 - - .
10. 2,3 . 2,6 - , - .
11. 45 . (45 .), - ,
12. ” DLQI, , .
13. - ” - ” - ” - ” (.) - .
14. ” ” ” ” , .

11. , 5 - 3 -
-1 .

12. .

-
- :
1. _____, _____, _____, 2012 (_____) _____, 6-
 2. _____, _____, _____, Workshop
” _____”, _____, 2012 (_____)
 3. _____, _____, _____, 2011
(_____)
 4. _____, _____, _____, 2011 (_____)
 5. _____, _____, _____, V, 2009 (_____)
 6. _____, _____, _____, 2009 (_____)
” _____”
_____ *Cyclosporine*. XVIII _____
_____ – _____
_____ – _____ “ 29.10.2009 – 1.11.2009 . . .
(_____)
 7. _____, _____, _____, 2007 (_____)
 8. _____, _____, _____, *Psoriasis arthropathica. Anaemia
secundaria*. _____ – V
“ _____”, _____, 1998

- :
9. Grozeva D, Gospodinov D, *Psoriasis pustulosa – treatment with Cyclosporine*, 2nd Munich International Summer Academy, 2011, July 24 – 29, Munich, Germany. (_____)
 10. Dimitrova V, Gospodinov D, Yordanova I, Schmid-Ott G. *Stigmatization and Quality of Life in Bulgarian Patients with Psoriasis*. 21 World Congress in Dermatology, 2007, Buenos Aires, Argentina. (_____)
 11. Gospodinov D, Trashlieva-Koicheva M., Grigorova S., *Psychological investigations in patients with psychosomatic dermatoses – perspective study* – 3-rd Congress of EADV, Copenhagen, Denmark, 1993
 12. Gospodinov D, Trashlieva M, Grigorova S. *Psoriasis and stress*, IV International Congress on Dermatology and Psychiatry, 1992, June 19 – 21, Philadelphia, USA. (_____)